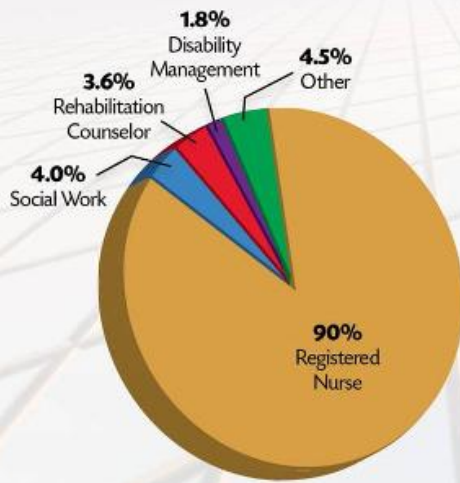


A BETTER CASE MANAGER, A Better Team™



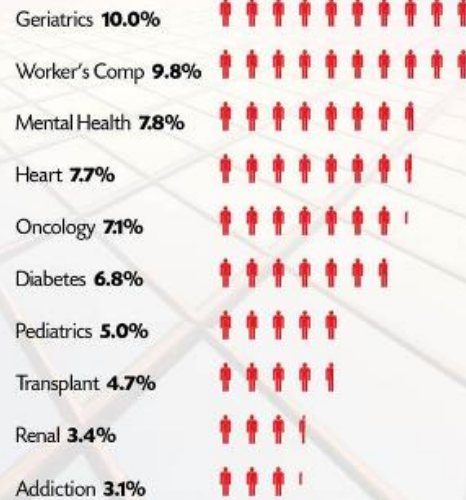
» Fast Facts

Majority of board-certified case managers are RNs;
More than 50% of CCMs have specialty training



LICENSURE/CERTIFICATION

N=4613



SPECIALTY TRAINING

Note: 45.9% had no specialty training. N=4613.

SOURCE: HEALTH2 RESOURCES AND CCMC, PROFESSIONAL AND DEMOGRAPHIC CHARACTERISTICS OF CCMs, AUG. 2012



Nursing represents the largest sector of the health professions. So it's no surprise that RNs are positioned to step up to increasing demands for high-quality health care services. RNs who become case managers rise to today's challenges: chronic condition management, care coordination and prevention of adverse events. *Source: Institute of Medicine. 2011. The Future of Nursing: Leading Change, Advancing Health.*

Did you know? More than 90% of board-certified case managers are registered nurses. Social workers represent another 4%, and nearly 4% are rehabilitation counselors. But specialty training within case management abounds; more than half of board-certified case managers surveyed were trained in at least one specialty area.

Are you interested in [hiring a board-certified case manager?](#)
Do you want to learn more about the Commission? [Click here.](#)

Commission for Case Manager Certification

15000 Commerce Parkway, Suite C
Mount Laurel, NJ 08054
Phone: 856-380-6836
www.cmc certification.org